

# MARQUIS II SERIES

Direct Vent Gas Fireplaces



The Marquis II series gas fireplace fills your home with comfort. Watch the scene unfold with an expansive view of the flames as they wrap around split logs. The authentic masonry appearance and accent lighting enhance the beautiful fire. Come home to the single-sided or see-through Marquis II series gas fireplace, and enjoy the entertainment and romance you deserve.

Available IntelliFire®  
app and voice control





## Marquis II Quick Look

- ClearView® glass gives you an expansive view of the flames and realistic split logs
- Showcase the interior with accent lighting and ember bed lights
- Customize the interior with up to three choices
- IntelliFire® touchscreen remote comes standard; you can also add the IntelliFire app or wireless wall switch for the solution that fits your life
- Perfect for medium and larger rooms
- Available in 36" or 42" single-sided models, and 42" see-through model
- Up to 57,500 BTUs



## CUSTOMIZE YOUR MARQUIS II FIREPLACE

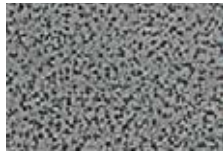
### Front Finishes



Bronze



Charcoal



Pewter

### Interior Panel Options



Tavern Brown



Tavern Brown Herringbone  
(single-sided only)



Reflective Black Glass  
(single-sided only)

### Control your comfort

**INTELLIFIRE APP** – All the features of a remote control with an app installed on your smart device. Monitor your fire from anywhere or even control it with the sound of your voice. IntelliFire is compatible with voice assistants Amazon Alexa and Google Assistant.

**TOUCHSCREEN REMOTE** – Features: on/off, flame height adjustment, fan speed, lights adjustment, thermostat mode, room temperature readout, child lock, timer mode, battery backup, cold climate mode, power vent, wall docking station (fan, lights and power vent are dependent on your fireplace).

**WIRELESS WALL SWITCH** – Features: on/off, battery strength indicator, cold climate mode



### Move heat where you want it

#### Heat-Zone® Technology

Draw heat from your fireplace to another room in your home. Redirect up to 50% of the heat, while reducing wall temperatures above the fireplace.



#### Heat-Out® Technology

Draw heat from your fireplace and direct it outside. Redirect up to 40% of the heat while reducing wall temperatures above the fireplace.



### Install virtually anywhere

#### Power Venting Technology

A fan-powered accessory with slim venting can zigzag throughout your home – up, down, over or under – making it possible to install a gas fireplace virtually anywhere.



### Marquis II technologies

**IntelliFire Touch® Ignition System** IntelliFire Touch is our most advanced intermittent-pilot ignition (IPI) system, making operating your appliance simple, smart and safe. Select from the IntelliFire app, touchscreen remote or wireless wall switch for the solution that fits your life.

**Direct Vent Technology** Direct vent gas inserts remove 100% of combustion exhaust and fumes to the outside of the home. These sealed fireplaces provide optimal heat, conserve energy and ensure clean indoor air quality.



For more information about Majestic efficient and environmentally-friendly products, please visit [majesticproducts.com](http://majesticproducts.com)

### Limited Lifetime Warranty<sup>1</sup>

The strongest in the industry, Majestic provides a limited lifetime warranty on the most important aspects of our gas-burning products: firebox and heat exchanger.

<sup>1</sup>: For full warranty details go to [majesticproducts.com](http://majesticproducts.com). The information provided in this literature is for planning purposes only and subject to change. Please consult the installation manual for actual installation. Actual product appearance may differ from product images. Fireplace, stove and insert surfaces get extremely HOT and can cause severe burns if touched. Keep a safe distance away. Visit [www.majesticproducts.com](http://www.majesticproducts.com) to learn more. Google and Google Home are trademarks of Google LLC. Amazon, Alexa, and all related logos are trademarks of Amazon.com, Inc. or its affiliates. © 2020 Hearth & Home® Technologies

Above: Marquis II 42" see-through with front in Charcoal and Tavern Brown brick interior

Other side: Marquis II 42" shown with front in bronze and Tavern Brown Herringbone brick interior

